

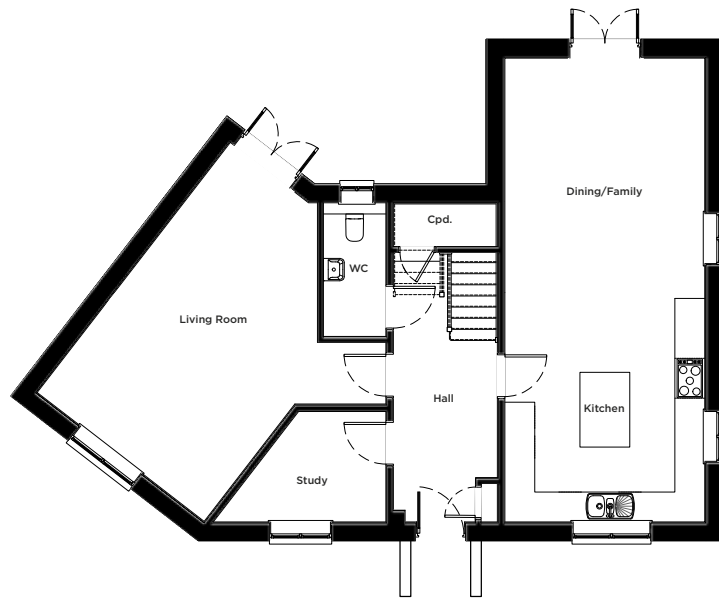


# HOME 25

A four bedroom, detached home with double garage and two parking spaces

# HOME 25

1792 sq ft | 166m<sup>2</sup>



## GROUND FLOOR

### Kitchen/Dining/Family

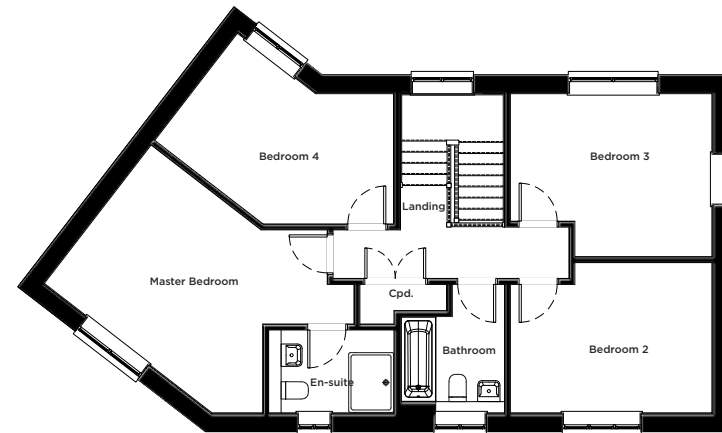
9.3m x 4.0m | 30' 6" x 13' 2"

### Living Room

6.4m x 5.7m | 21' 2" x 18' 7"

### Study

3.5m x 2.8m | 11' 4" x 9' 2"



## FIRST FLOOR

### Master Bedroom

5.4m x 4.3m | 17' 9" x 14' 2"

### Bedroom 2

4.0m x 3.0m | 13' 3" x 9' 11"

### Bedroom 3

4.8m x 3.3m | 15' 10" x 10' 10"

### Bedroom 4

4.0m x 3.3m | 13' 3" x 10' 9"

01202 406127

[morrishomes.co.uk](http://morrishomes.co.uk)

Floor plans are provided to indicate proposed floor layout for each home. Room measurements are accurate within + or - 50mm, however it is not recommended that these measurements are used for flooring installation, or such like. CGIs are not to scale. Finishes and materials may vary from those shown and landscaping is illustrative only.