



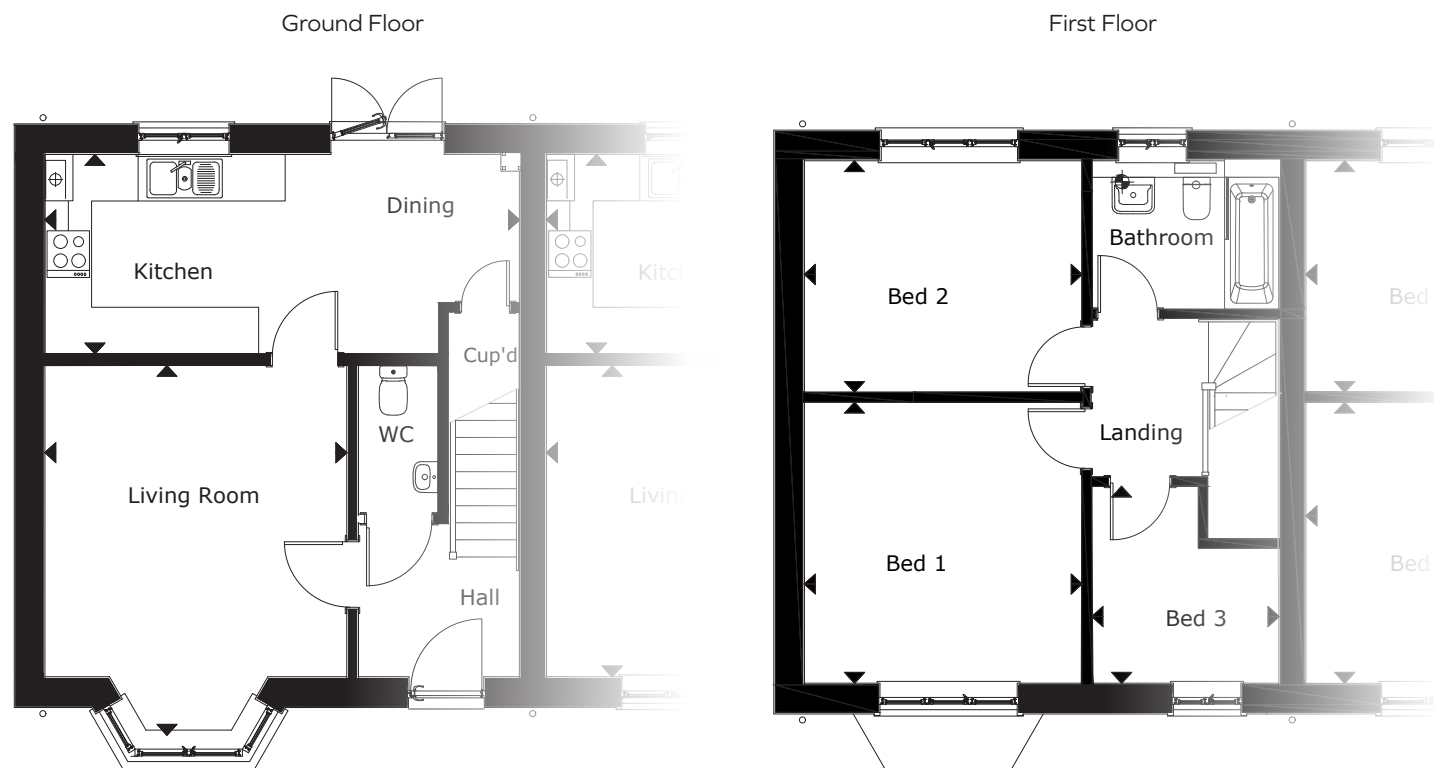
## Plot 39

Three bedroom end of terrace home with enclosed rear garden and off-road parking for two vehicles.



MORRISH HOMES  
BUILDING QUALITY THROUGH GENERATIONS





### Plot 39

Living room	3.89 x 4.76m (12'7" x 15'6") Max	Bedroom 1	3.56 x 3.61m (11' 7" x 11' 8")
Kitchen / Dining Room	6.11 x 2.57m (20'0" x 8'4")	Bedroom 2	3.56 x 2.93m (11' 7" x 9' 7")
		Bedroom 3	2.40 x 2.52m (7' 9" x 8' 2") Max

## Plot 39 Total area: 899 Sqft

Plot floor plans are provided to indicate proposed floor layout for each home. Room measurements are accurate, within + or - 50mm, however it is not recommended that these measurements are used for flooring installation, or such like.

\*The CGI representation shown may not completely reflect all aspects of the external finish to this property. Before reserving, please view the drawings with the sales representative or if the property is built ensure a viewing of the property takes place before reserving.



MORRISH HOMES  
BUILDING QUALITY THROUGH GENERATIONS