



HOME 386

A four bedroom detached home
with allocated parking and
double garage

SYDENHAM SQUARE
— POUNDBURY —

HOME 386

A four bedroom, detached home with a double garage and allocated parking

SPECIFICATION

Fully fitted kitchen with appliances

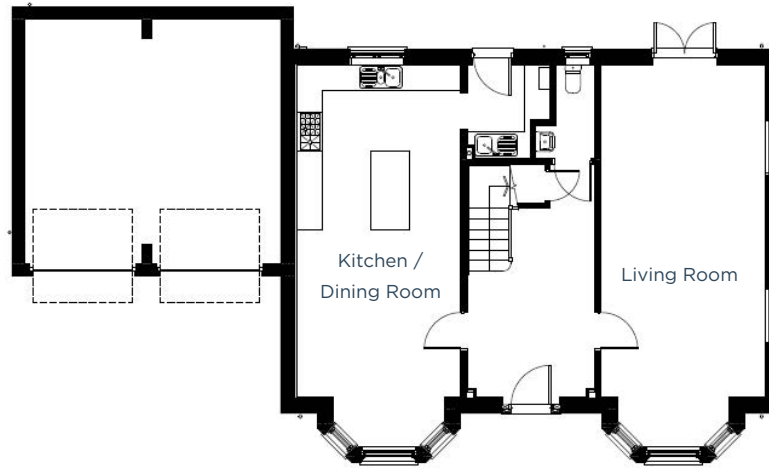
Master bedroom with en-suite

Contemporary bathroom

Downstairs cloakroom

Enclosed, fully turfed rear garden

Energy efficient,
gas central heating



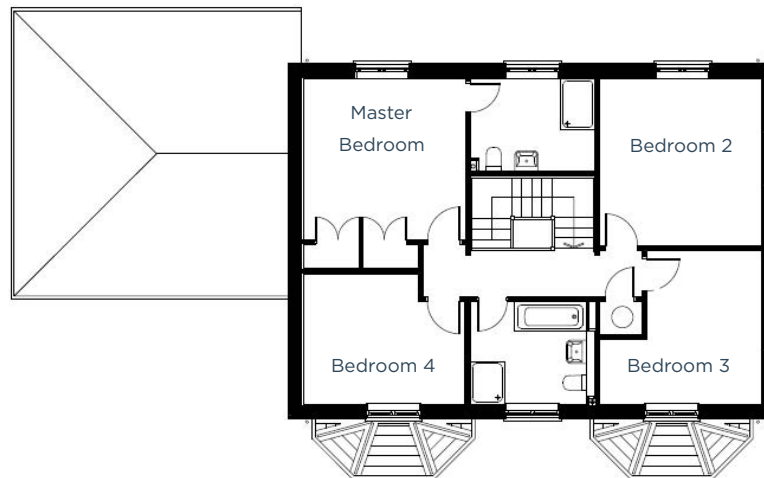
GROUND FLOOR

Kitchen / Dining Room

7.7m x 3.8m | 25' 2" x 12' 5"

Living Room

7.7m x 3.8m | 25' 2" x 12' 5"



FIRST FLOOR

Master Bedroom

3.8m x 3.8m | 12' 5" x 12' 6"

Bedroom 2

3.9m x 3.8m | 13' x 12' 6"

Bedroom 3

3.8m max x 3.6m | 12' 6" x 11' 9"

Bedroom 4

3.8m max x 3.1m | 12' 6" x 10' 1"

01305 213745 | poundbury@morrishomes.co.uk
morrishomes.co.uk

Floor plans are provided to indicate proposed floor layout for each home. Room measurements are accurate within + or - 50mm, however it is not recommended that these measurements are used for flooring installation, or such like.