



# HOME 389

A four bedroom detached home  
with allocated parking and  
double garage

SYDENHAM SQUARE  
— POUNDBURY —

# HOME 389

A four bedroom, detached home with a double garage and allocated parking

## SPECIFICATION

Fully fitted kitchen with appliances

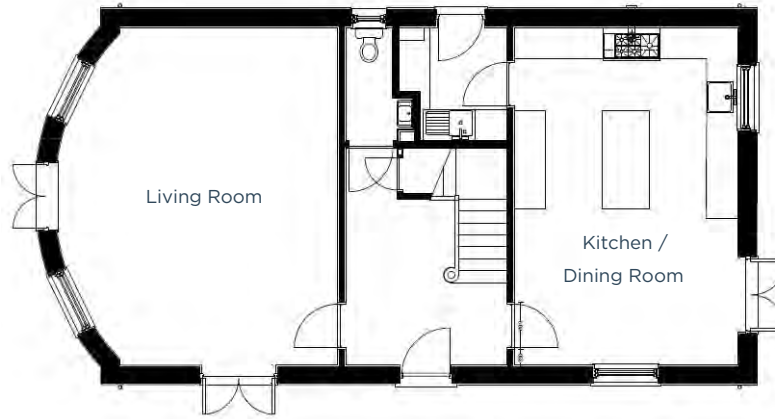
Master bedroom with en-suite

Contemporary bathroom

Downstairs cloakroom

Enclosed, fully turfed rear garden

Energy efficient,  
gas central heating



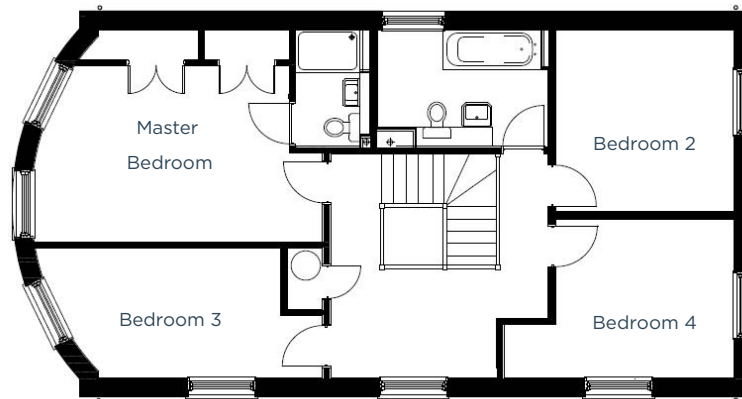
### GROUND FLOOR

#### **Kitchen / Dining Room**

6.5m x 4.3m | 21' 4" x 14' 2"

#### **Living Room**

6.5m x 5.5m max | 21' 4" x 18' max



### FIRST FLOOR

#### **Master Bedroom**

4.5m x 4m max | 14' 7" x 13' 1" max

#### **Bedroom 2**

3.4m x 3.3m | 11' 1" x 10' 8"

#### **Bedroom 3**

4.5m x 2.4m max | 14' 7" x 7' 8" max

#### **Bedroom 4**

3.3m max x 3m | 10' 8" max x 9' 8"

01305 213745 | poundbury@morrishhomes.co.uk  
morrishhomes.co.uk

Floor plans are provided to indicate proposed floor layout for each home. Room measurements are accurate within + or - 50mm, however it is not recommended that these measurements are used for flooring installation, or such like.