



HOME 392

A four bedroom detached home
with allocated parking and
double garage

SYDENHAM SQUARE
— POUNDBURY —

HOME 392

A four bedroom, detached home with a double garage and allocated parking

SPECIFICATION

Fully fitted kitchen with appliances

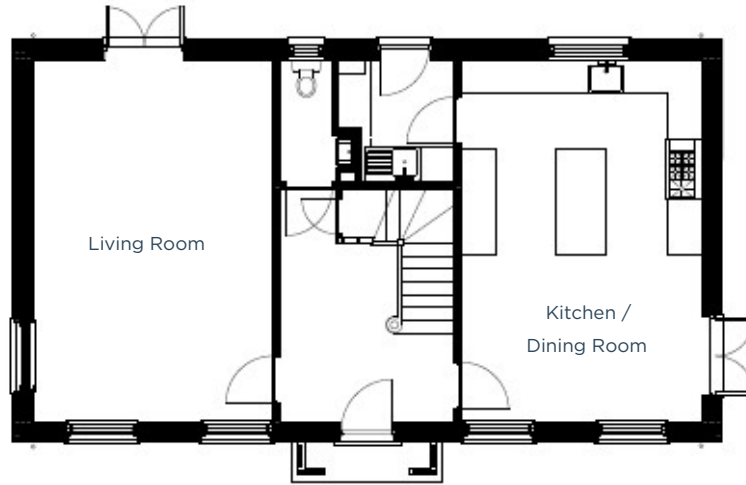
Master bedroom with en-suite

Contemporary bathroom

Downstairs cloakroom

Enclosed, fully turfed rear garden

Energy efficient,
gas central heating



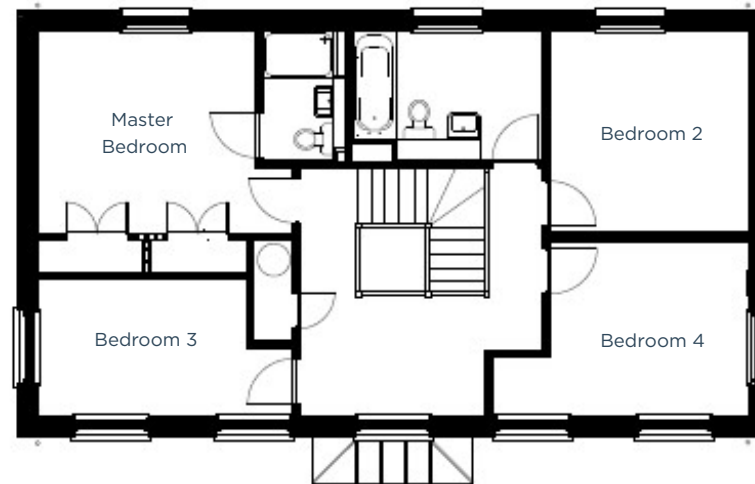
GROUND FLOOR

Kitchen / Dining Room

6.5m x 4.3m | 21' 5" x 14' 3"

Living Room

6.5m x 4.3m | 21' 5" x 14' 3"



FIRST FLOOR

Master bedroom

3.7m x 3.4m | 12' 2" x 11' 3"

Bedroom 2

3.4m x 3.3m | 11' 3" x 11' 1"

Bedroom 3

4.2m x 2.3m | 13' 9" x 7' 6"

Bedroom 4

3m x 3m | 9' 10" x 9' 10"

01305 213745 | poundbury@morrishomes.co.uk
morrishomes.co.uk

Floor plans are provided to indicate proposed floor layout for each home. Room measurements are accurate within + or - 50mm, however it is not recommended that these measurements are used for flooring installation, or such like.