



HOME 393

A five bedroom, detached home
with double garage

SYDENHAM SQUARE
— POUNDBURY —

HOME 393

A five bedroom, detached home
with double garage

SPECIFICATION

Fully fitted kitchen
with integrated appliances

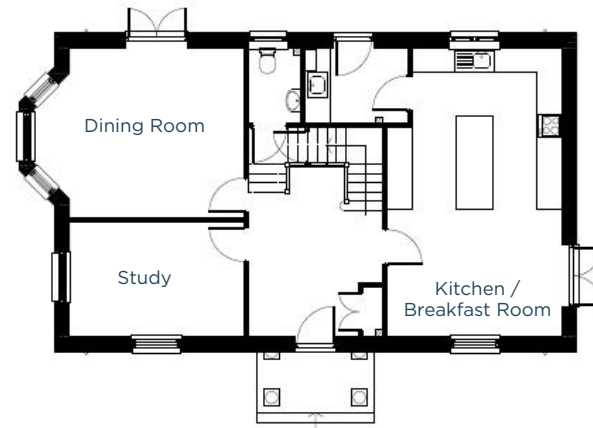
Master bedroom with en-suite & dressing room

Contemporary bathroom

Utility Room

Enclosed, fully turfed rear garden

Energy efficient,
gas central heating



GROUND FLOOR

Kitchen / Breakfast Room

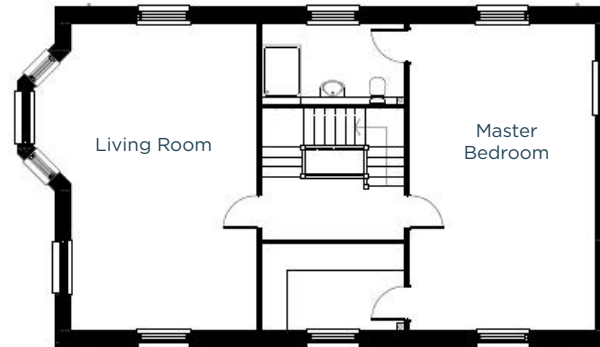
7m x 3.6m | 22' 9" x 11' 8"

Dining Room

4.2m x 4.1m | 13' 7" x 13' 4"

Study

4.2m x 2.8m | 13' 7" x 9' 1"



FIRST FLOOR

Living Room

7m x 4.2m | 22' 9" x 13' 7"

Master Bedroom

7m x 4.2m | 22' 9" x 13' 7"



SECOND FLOOR

Bedroom 2

4.3m x 4.2m | 14' 1" x 13' 7"

Bedroom 3

4.8m max x 3.6m | 15' 7" max x 11' 8"

Bedroom 4

3.7m x 3.3m | 12' 1" x 10' 8"

Bedroom 5

4.2m x 2.6m | 13' 7" x 8' 5"

01305 213745 | poundbury@morrishomes.co.uk
morrishomes.co.uk

Floor plans are provided to indicate proposed floor layout for each home. Room measurements are accurate within + or - 50mm, however it is not recommended that these measurements are used for flooring installation, or such like.